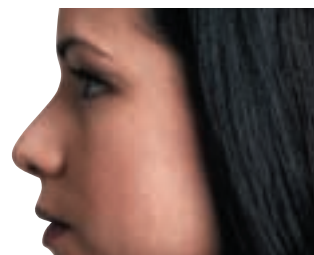


**OKIFAX 250**



**OKIFAX 250**  
Thermal Transfer Plain Paper



**Three-in-one function  
for your home and  
personal use**



**OKI**  
People to People Technology

# OKIFAX 250

## Thermal Transfer Plain Paper

***OKIFAX 250** is a complete voice, fax and copy solution for home users, and a one-per-desk answer for company users looking for personal fax convenience and confidential operation from the desktop.*

Elegant enough for any home or desktop, the **OKIFAX 250** is an ultra-compact plain paper fax with integrated telephone handset. It offers simple, quality fax and telephone functions, plus convenience copying – while the low capital outlay makes it a perfect choice for low-volume faxing needs.

### Compact design

The sleek, low-profile design with built-in handset occupies the small space you'd expect with a thermal fax machine, yet OKIFAX 250 brings all the benefits of plain paper output.

### Great little performer

High performance and high quality meet in the OKIFAX 250. The 9.6 K modem transmits at 20 seconds per page, and the print speed is approximately two pages-per-minute. And to ensure you don't lose jobs if paper or ribbon runs out, the 20-page memory stores your incoming faxes safely for later printing.

### Time-saving convenience

The 40-sheet paper capacity means refilling is required less than once a week for typical low-volume requirements, while the 10-sheet document feeder and 20 page transmission memory mean there's no waiting to feed pages manually. OKIFAX 250 is also an excellent, plain-paper convenience copier, able to handle up to 30 copies per page of a sheet-fed document.

You can program your five most-used numbers for one-touch dialling, store 50 more numbers under alpha groups for fast dialling, and dial without lifting the handset – all of which saves time and cuts the risk of mis-dialling.

### Plain paper output

OKIFAX 250 uses plain paper – a big advantage over thermal paper – meaning you can write on incoming documents without needing to copy them, and file them safely, knowing they won't fade quickly. Just as important, your OKIFAX 250 is ready to produce crisp, plain paper copies at a touch.

**OKIFAX**



**Compact - easy-to-use - economical**

# OKIFAX 250

## **Excellent lifetime value**

Costs are under control with the OKIFAX 250 – from the initial low capital outlay and plain paper output to the availability of long-lasting (300-page) thermal transfer ribbons. And unlike ink-jet and similar technologies, it runs at a fixed cost per page whether printing photos or text.

## **Environmentally friendly**

Environmental concerns are important to Oki, so OKIFAX 250 is virtually ozone free in operation.

## **Backed by OKI**

The OKIFAX 250 brings you plain paper faxing at its best – backed by the support and resources of a major international company founded in 1881.



## **OKIFAX 250 highlights**

- **9.6 K modem for 20 seconds per page transmission speed**
- **Convenience copying at around 2 pages per minute**
- **20 page memory for transmission and out-of-paper reception**
- **40-sheet plain paper capacity**
- **10-sheet automated document feeder**
- **512 K 20-page memory**
- **5 one-touch and 50 alpha dials**
- **Integrated telephone handset**
- **On-hook dialling**
- **Small footprint.**

ESTABLISHED  
**1881**

**OKI**  
People to People Technology

# OKIFAX 250

# OKIFAX

OKIFAX 250

## TECHNICAL FEATURES



### Major Applications

OKIFAX 250 provides easy-to-use voice, copy and fax functions for the home user from a single, compact machine. With its multiple functions and low capital outlay, it is also perfect for use on an individual desktop in company offices where personal convenience and confidentiality are required.

### Ease of Use

- Integrated telephone handset - doubles as a telephone
- Hands-free dialling - hands free while OKIFAX 250 makes the connection
- 20-page reception memory - message is saved in memory if consumables run out
- 5 one-touch dials - for those frequently dialled numbers
- 50 alphabetical dials - for those frequently dialled numbers
- Easy polling function - for fax retrieval from another machine
- Fax/tel and Fax/TAD switching - auto switching between fax & phone or TAD

### Paper Handling

- Up to 10-page automated document feeder
- 40-page plain paper capacity
- Document size A4
- Up to 30 copies per page in copy mode

### Environmentally Friendly

- Energy Star approved
- Virtually ozone-free operation



### Memory

- 512Kb memory - approx. 20 pages
- Store up to three jobs in memory for later transmission
- Receives into memory - no loss of messages if consumables run out (up to available memory capacity)

### Speed, Power, Specification

- Multiple copying - up to 30 copies per page
- Compatibility - group 3
- Transmission speed - 20 secs
- Modem speed - 9.6k
- Coding scheme - MH
- Thermal Transfer ribbons - 300 pages
- Starter ribbon - 100 pages (included with product)
- Weight - approx. 3kgs

### Controlled Costs

- Delayed transmission from ADF
- 300-page thermal transfer ribbon available (shipped with 100-page starter ribbon)
- Journal and error reports produced

#### OkI Systems (UK) Limited

550 Dundee Road,  
Slough Trading Estate,  
Slough, Berkshire SL1 4LE.

Telephone: 01753 819819

Fax: 01753 819899

Faxback: 07000 654 654

Website: www.oki.co.uk

**All transmission speeds are based on ITU-T No.1 Document STD/MH transmission phase.**

**TAD connectivity dependant on local supplier.**

**All specifications are subject to local Telecommunications Authority approval. Specifications subject to change without notice. All trademarks acknowledged.**

As an ENERGY STAR partner, OkI has determined that this product meets the ENERGY STAR guidelines for energy efficiency

# OKI

People to People Technology