

you can
Canon

SELPHY
COMPACT PHOTO PRINTER



Set your images free.



Simple. Special. Stunning. SELPHY.

Quality images and Canon are synonymous. With over sixty years of experience in both the photographic and printing industry, Canon has a unique understanding of what it takes to produce great images and prints. This knowledge is harnessed in Canon's range of SELPHY Compact Photo Printers that give you far more than stunning, photolab-quality prints of your digital photos from just €0.30 per print*. They give you the freedom to print whenever, however and wherever you want. And every printer in the SELPHY range is simple to use, incredibly quick and remarkably compact. Don't keep your digital memories trapped in bits and bytes – set them free with SELPHY.

* The price of €0.30 per print is Canon's recommended retail price, based on Canon's recommended retail price of the KP-108IP 10x15cm Ink and Paper Set.

A PHOTOLAB FOR HOME...

Every SELPHY printer has a beautiful appearance and compact shape that fits in perfectly with the interior design of almost any home. And they're so simple to use, you can have a beautiful photo print in your hands literally seconds after connecting your camera or inserting your memory card.

...AND AWAY

While most of the SELPHY range is designed for the home, SELPHY CP710 and SELPHY CP510 are perfectly mobile with the optional rechargeable battery pack (included with SELPHY CP600). This gives you the freedom to print wherever your photographic adventures take you.

ANY CAMERA, ANY TIME

Every printer in the range is PictBridge compliant. This means that all Canon Digital Still Compact cameras (both PictBridge and Canon Direct Print compatible), any PictBridge compatible digital camera, some digital SLR cameras and camcorders, and even some camera phones* – will work. Simply connect it to the printer (or in the case of the SELPHY CP710 and SELPHY DS810 you can also place your memory card into the dedicated slot), select your image and print. No PC required. It's that easy. In fact, it's just as easy to refill the paper or ink in the printers – another design consideration that makes the SELPHY range so special.

* Printing from a compatible camera phone via IrDA is only possible with SELPHY CP600 and SELPHY DS810.



To make direct printing even easier, all of the latest Canon digital cameras have a Print/Share button that illuminates when ready and automatically prints the selected image when pressed.



1 CONNECT
your camera or insert the memory card into your printer*.



2 SELECT
the image you want – crop or trim for maximum effect.



3 PRINT
your pictures in a variety of sizes.

* Only available on SELPHY CP710 and SELPHY DS810.



The beauty of choice.

Every SELPHY printer allows you to choose from a number of different printing formats depending on your needs. And with each printer you are sure to get durable, fade resistant photographs with an astounding colour range and sharpness every time.

PHOTOLAB QUALITY

Used in the SELPHY CP600, SELPHY CP710 and SELPHY CP510, dye-sublimation technology delivers high-quality, fade resistant 300 dpi prints with a similar look and feel to the traditional silver halide prints you get from the photolab. Every print is covered with a high-gloss protective coating to help protect it from moisture and fading. And all this from a range of printers barely larger than the paper they print on.



FINE TECHNOLOGY FOR SPEED, DETAIL AND COLOUR

The SELPHY DS810 produces bright, vibrant, durable prints using a unique Inkjet printing technique combined with Canon's new FINE print head. You can print on a variety of surfaces too, from a super high gloss to a satin finish.



100 YEARS PRINT PRINTS THAT TAKE SECONDS... AND LAST A CENTURY

All the SELPHY printers produce high-quality borderless prints in a matter of seconds. This is especially useful when printing a series of photographs – they'll be ready in minutes, not hours. Best of all, every SELPHY print can last up to a hundred years* in your favourite photo albums.

* See specifications for details.



THE CHOICE IS YOURS

Not everyone wants a standard size print. Thankfully the SELPHY Compact Photo Printers are extremely accommodating. Choose from bordered and borderless postcard size, 10 x 20 cm wide size prints, credit card size prints, stickers and even mini-stickers. Canon digital cameras give you the option to rotate the image 90 degrees or crop/zoom in on details – and with the latest Canon cameras you can also create ID Photo Prints and Movie Prints*. Furthermore, the SELPHY DS810 with its unique inkjet printing technology and a resolution of up to 4800 x 1200 dpi** offers choices such as printing your own photo index or producing multiple images on one print.

* Options depend on camera, printer, printer tray and printing standard chosen.

** Addressable resolution, PC only.



SELPHY CP600
COMPACT PHOTO PRINTER

Whenever, Wherever.

As the flagship of the SELPHY range, Canon's SELPHY CP600 is stylish, lightweight and best of all, portable. With its rechargeable battery, you can print directly from your camera wherever you happen to be. And its high-speed DIGIC II processor and fast print engine mean you'll have stunning, photolab quality prints in just a few seconds.



- High quality and durable colour photo prints
- Prints directly from any PictBridge compatible camera – no PC required
- Easy to use, one-touch operation
- Truly portable, rechargeable battery pack included
- Equipped with DIGIC II processor for enhanced image quality
- Fast borderless photo printing
- Wireless printing from some camera-phones via IrDA*
- Stylish, compact design
- Multiple print sizes with convenient ink/paper packs*
- Photo ID, Movie Print and N-Up Layout (Multi-Image) prints*
- Printing from Windows and Mac computers supported (software supplied)

* See specifications for details.



SELPHY DS810
COMPACT PHOTO PRINTER

See what your screen can do.

Share superb digital photo prints straight away, without using a PC. The stylish SELPHY DS810 photo printer has a large colour LCD screen for easy viewing, editing and printing of perfect borderless photos – direct from digital cameras, memory cards or camera phones.



- Compact, inkjet photo printer with a large 2.5" (6.3cm) colour LCD viewer
- View, edit and print digital photos directly from popular memory cards*
- Print photos directly from camera phones with IrDA or optional BU-20 Bluetooth® unit
- Print a high quality, borderless photo in approx. 63 seconds
- Direct photo printing from PictBridge compatible digital cameras & camcorders
- Up to 4800*x1200dpi resolution FINE print head with 2pl Micro-Nozzles for grain free prints
- ChromaLife100 system for long-lasting, beautiful photos*
- Windows 2000/XP / Mac compatible, USB connectivity

* See specifications for details.



Printing fun for everyone.

Make your family's memories permanent and pass them around as glossy, durable photo prints from the SELPHY CP510. Immediate photos when you want at a price that makes sense – all printed direct from your digital camera via the clever retractable cable.

Explore your printing options.

Print direct from your camera, memory card or computer via PictBridge – with SELPHY CP710, you can choose your printing option as easily as you choose your shots. Furthermore, its compact design, easy-to-use features and the optional battery pack enables you to share memories while you're on the move.

- Prints direct from PictBridge/Direct Print compatible cameras/camcorders – no PC required
- Easy printing direct from most popular digital camera memory cards*
- Image selection from the printer's LCD screen
- High quality, 100 year* durable colour photo prints
- Glossy coating protects your prints against splashes and sticky fingers
- Fast, borderless, one-minute-lab* photo printing
- The perfect partner for any digital camera
- Stylish, compact design with built in retractable USB cable
- Printing from Windows and Mac computers also supported (software supplied)
- Optional rechargeable battery for easy mobile photo printing



SELPHY CP710
COMPACT PHOTO PRINTER

* See specifications for details.



- Canon's best value SELPHY home photo printing solution
- High quality, 100 year* durable colour photo prints
- Glossy coating protects your prints against splashes and sticky fingers
- Fast, borderless, one-minute-lab* photo printing
- Easy-to-use printing fun for the whole family
- Stylish, compact design with built in retractable USB cable
- Prints direct from any PictBridge or Direct Print compatible camera/camcorder – no PC required
- The perfect partner for any digital camera
- Printing from Windows and Mac computers also supported (software supplied)
- Optional rechargeable battery for easy, mobile photo printing

SELPHY CP510
COMPACT PHOTO PRINTER

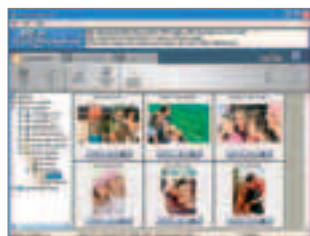


* See specifications for details.

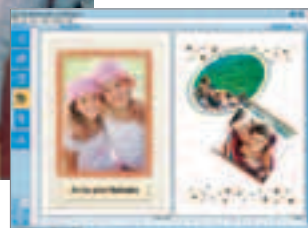
Print and Share.

Print, share, browse, transfer, edit – you can do it all with Canon's free image management software.

While the SELPHY range has been designed primarily for Direct Printing, you can still print through your PC or Mac. And with Canon's photo software you can do a lot more – organise, retouch, and share images with friends and family.



Easy-PhotoPrint for PC brings you superb image correction tools and enables you to produce high quality prints. (SELPHY DS810, CP710 and CP510 only).



For PC users, PhotoRecord lets you create and print digital photo albums, with text, backgrounds, picture frames and more. (SELPHY CP600, CP710 and CP510 only).

CANON iMAGE GATEWAY

The CANON iMAGE GATEWAY¹ gives you 100MB of free online space for storing your images and movies² – perfect for sharing them all with friends and family. It's easy and it's fun.

1. Not available in all regions.
2. Upload of movie clips requires a download and installation of the Movie upload task module from the CANON iMAGE GATEWAY.



There's more to explore...

With SELPHY, you not only print in many ways but also in many sizes. The rechargeable battery pack and the carrying case further add flexibility by enabling you to print wherever you like.

PAPER AND INKS

Replacing the paper and ink cartridges in your SELPHY Compact Photo Printer is as easy as printing itself. All SELPHY printers come with a variety of paper sizes. Simply ask your reseller for genuine Canon media and ink. More detailed information on the type of media taken by each model is available in the specifications section.



SELPHY CP600, CP710, CP510
Ink Cassette and Paper Kit
(supplied together in one box)



SELPHY DS810
Ink Cartridge and Paper
(items sold separately)



DCC-CP1
Printer Carrying Case



PCW-CP100
Paper cassette for wide size paper



PCL-CP100
Paper cassette for L-size paper



PCC-CP100
Paper cassette for credit card size paper



NB-CP2L
Battery Pack

	SELPHY CP600	SELPHY CP710	SELPHY CP510	SELPHY DS810
CARRYING CASE				
CP Printer Carrying Case DCC-CP1	●	●	●	
PAPER CASSETTE				
Wide paper cassette [PCW-CP100]	●	●	●	
L-size paper cassette [PCL-CP100]	●	●	●	
Credit card paper cassette [PCC-CP100]	●	●	●	
	(supplied in kit)			
POWER SUPPLY & BATTERY CHARGERS				
Rechargeable Battery Pack NB-CP2L	●	●	●	
	(supplied in kit)			
INK PAPER SETS				
Ink Paper Set KP-361P	●	●	●	
Ink Paper Set KP-721P	●	●	●	
Ink Paper Set KP-1081P	●	●	●	
Ink Paper Set KL-361P	●	●	●	
Ink Paper Set KC-361P	●	●	●	
INK LABEL SETS				
Ink Label Set KC-181L	●	●	●	
Ink Label Set KC-181F	●	●	●	
Ink Label Set KW-241P	●	●	●	
PAPER SETS				
Photo Paper Pro [PR-101]				●
Photo Paper Plus Glossy [PP-101]				●
Photo Paper Plus Semi-Gloss [SG-101]				●
Glossy Photo Paper [GP-401]				●
Glossy Photo Paper "Everyday Use" [GP-501]				●
Photo Stickers [PS-101]				●

Specifications

SELPHY CP600
COMPACT PHOTO PRINTER



SELPHY DS810
COMPACT PHOTO PRINTER



SELPHY CP710
COMPACT PHOTO PRINTER



SELPHY CP510
COMPACT PHOTO PRINTER



PRINTING SYSTEM Method Resolution Colours	Dye-sublimation thermal transfer printing system, with DIGIC II processor 300 x 300 dpi 3 colour inks with over coating, 256 levels per colour (24 bit colour depth)	Inkjet Printer 4800 x 1200 dpi ⁴ 3 colour inks (C, M and Y) FINE print head ejecting minimum 2pl ink drop size	Dye-sublimation thermal transfer printing system 300 x 300 dpi 3 colour inks with over coating, 256 levels per colour (24 bit colour depth)	Dye-sublimation thermal transfer printing system 300 x 300 dpi 3 colour inks with over coating, 256 levels per colour (24 bit colour depth)
MEDIA & CARTRIDGE Postcard Size Wide Size L Size Credit Card Size Credit Card Size Stickers Mini Stickers Ink Cartridge Image Longevity	148 x 100mm – [KP-36IP, KP-72IP, KP-108IP] 100 x 200mm – [KW-24IP] ¹ 119 x 89mm – [KL-36IP] ¹ 86 x 54mm – [KC-36IP] 86 x 54mm – [KC-18IF] 22.0 x 17.3mm (x8 stickers on one sheet) – [KC-18IL] Included with media 100 Years Print ⁹	101.6 x 152.4mm [Photo Paper Pro (PR-101), Photo Paper Plus Glossy (PP-101), Photo Paper Plus Semi-Gloss (SG-101), Glossy Photo Paper (GP-401), Glossy Photo Paper "Everyday Use" (GP-501)] – 86 x 54mm-[GP-401] – 100 x 148mm (x16 stickers on one sheet)-[PS-101] BCI-16 colour cartridge [70 pages (101.6 x 152.4mm)] ⁵ 100 Years Print ¹⁰	148 x 100mm – [KP-36IP, KP-72IP, KP-108IP] 100 x 200mm – [KW-24IP] ¹ 119 x 89mm – [KL-36IP] ¹ 86 x 54mm – [KC-36IP] ¹ 86 x 54mm – [KC-18IF] ¹ 22.0 x 17.3mm (x8 stickers on one sheet) – [KC-18IL] ¹ Included with media 100 Years Print ⁹	148 x 100mm – [KP-36IP, KP-72IP, KP-108IP] 100 x 200mm – [KW-24IP] ¹ 119 x 89mm – [KL-36IP] ¹ 86 x 54mm – [KC-36IP] ¹ 86 x 54mm – [KC-18IF] ¹ 22.0 x 17.3mm (x8 stickers on one sheet) – [KC-18IL] ¹ Included with media 100 Years Print ⁹
MEDIA INPUT Sheet Feeder	Auto feed from paper cassette	Auto feed from paper cassette	Auto feed from paper cassette	Auto feed from paper cassette
PRINT SPEEDS Postcard Size Wide Size L Size Credit Card Size Credit Card Size Stickers Mini Stickers	Approx. 63 sec ⁶ Approx. 78 sec ⁶ Approx. 54 sec ⁶ Approx. 34 sec ⁶ Approx. 34 sec ⁶ Approx. 34 sec ⁶	Approx. 63 sec ⁷ – – Approx. 32 sec ⁷ – Approx. 85 sec ⁷	Approx. 58 sec ⁶ Approx. 74 sec ⁶ Approx. 50 sec ⁶ Approx. 31 sec ⁶ Approx. 31 sec ⁶ Approx. 31 sec ⁶	Approx. 58 sec ⁶ Approx. 74 sec ⁶ Approx. 50 sec ⁶ Approx. 31 sec ⁶ Approx. 31 sec ⁶ Approx. 31 sec ⁶
PRINTING Print Modes	Borderless, Bordered, Multiple Print (requires Mini Stickers paper, producing 8 prints on one piece of paper), ID Photo Print ² , Movie Print ² , N-up (Multi-Image) Layout ² , Fixed Size Layout ² , File Name Print ²	Borderless, Bordered, Index Print, Multiple Print (on 100 x 148mm sticker paper, 4-up, 9-up and 16-up), Layout Print (on 101.6 x 152.4mm paper 2-up, 4-up, 8-up)	Borderless, Bordered, Multiple Print (requires Mini Stickers paper, producing 8 prints on one piece of paper), ID Photo Print ² , Movie Print ² , 2-up and 4-up Layout ² , Fixed Size Layout ² , File Name Print ² , Image Optimization ² , DPOF Image Print ²	Borderless, Bordered, Multiple Print (requires Mini Stickers paper, producing 8 prints on one piece of paper), ID Photo Print ² , Movie Print ² , 2-up and 4-up Layout ² , Fixed Size Layout ² , File Name Print ² , Image Optimization ² , DPOF Image Print ²
PRINT METHOD Direct Printing From a Camera Direct From a Memory Card Direct From a Camera Phone Print From a Computer	Canon Direct Print compliant, PictBridge compliant – IrDA (printing from some mobile camera phones) ³ YES, requires standard USB cable	Canon Bubble Jet Direct compliant, PictBridge compliant Supported card types ⁸ IrDA (printing from some mobile camera phones) ¹³ , Optional BlueTooth Adapter BU-20 (printing from some mobile camera phones) ¹² YES, requires standard USB cable	Canon Direct Print compliant, PictBridge compliant Supported card types ⁸ – YES, requires standard USB cable	Canon Direct Print compliant, PictBridge compliant – – YES, requires standard USB cable
INTERFACE Camera Computer LCD Monitor	USB type A port on printer USB type B port on printer –	USB type A port on printer USB type B port on printer 2.5" Colour LCD viewer with multi-language user interface ¹¹ and on-board image enhancement tools	Integrated USB cable (Mini-B), USB type A port on printer USB type B port on printer 1.5" Colour LCD with icon based Graphical User Interface	Integrated USB cable (Mini-B), USB type A port on printer USB type B port on printer –
SUPPORTED OPERATING SYSTEM PC Macintosh	Windows 98SE/Me/2000 (SP4)/XP/XP (SP1-SP2) OS X v10.1.5 – 10.3	Windows 2000/XP OS X v10.2.1 or later	Windows 2000 (SP4)/XP (SP1-2) Mac OS X v10.2 – v10.3	Windows 2000 (SP4)/XP (SP1-2) Mac OS X v10.2 – v10.3



Dye-Sub



100 YEARS PRINT



Specifications

SELPHY CP600
COMPACT PHOTO PRINTER



SELPHY DS810
COMPACT PHOTO PRINTER



SELPHY CP710
COMPACT PHOTO PRINTER



SELPHY CP510
COMPACT PHOTO PRINTER



SOFTWARE Browsing & Printing	ZoomBrowser EX (PhotoRecord)/ImageBrowser	PC: Easy-PhotoPrint Mac: Easy-PhotoPrint PC/Mac	PC: Easy-PhotoPrint, PhotoRecord, PhotoStitch Mac: ImageBrowser, PhotoStitch PC/Mac	PC: Easy-PhotoPrint, PhotoRecord, PhotoStitch Mac: ImageBrowser, PhotoStitch PC/Mac
Drivers	PC/Mac			
POWER SOURCE AC Power Supply Battery Pack	YES, supplied YES, supplied (Approx. 36 Postcard Size prints per full charge)	YES, supplied - Approx. 1.6W (standby), approx. 16W (printing)	YES, supplied YES, optional (Approx. 36+ Postcard Size prints per full charge) Approx. 4W (standby), approx. 60W (printing)	YES, supplied YES, optional (Approx. 36+ Postcard Size prints per full charge) Approx. 4W (standby), approx. 60W (printing)
Power Consumption	Approx. 4W (standby), approx. 60W (printing)			
ACCESSORIES Case Paper Cassette	CP Printer Carrying Case DCC-CP1 Wide paper cassette [PCW-CP100], L size paper cassette [PCL-CP100]	- -	CP Printer Carrying Case DCC-CP1 Wide paper cassette [PCW-CP100], L size paper cassette [PCL-CP100], Credit card cassette [PCC-CP100]	CP Printer Carrying Case DCC-CP1 Wide paper cassette [PCW-CP100], L size paper cassette [PCL-CP100], Credit card cassette [PCC-CP100]
Power Supply & Battery Chargers Other	Battery Pack NB-CP2L -	- BU-20 Bluetooth Adapter for printing from compatible camera phones and PDA's ¹²	Battery Pack NB-CP2L -	Battery Pack NB-CP2L -
PHYSICAL SPECIFICATIONS Operating Environment Dimensions Weight	5-40°C, 20-80% humidity 178.0 x 131.0 x 58.5mm 875g (Excluding the battery, paper cassette and ink cassette)	5-35°C, 10-90% humidity 220.0 x 222.0 x 99.0mm 2100g	5-40°C, 20-80% humidity 178.0 x 131.0 x 63.0mm 980g (Excluding paper cassette and ink cassette)	5-40°C, 20-80% humidity 178.0 x 131.0 x 63.0mm 940g (Excluding paper cassette and ink cassette)

- 1 Requires optional paper cassette.
- 2 Not all modes/features are supported by all cameras or when printing from memory cards.
- 3 Pictures must be taken in the JPEG format and transferred using the IrOBEX protocol (IrMC also supported by SELPHY DS810).
- 4 Addressable resolution, PC only.
- 5 Printing Canon standard patterns on 10x15cm Photo Paper Plus Glossy with the default settings in Windows XP driver, in borderless printing mode, using Windows XP's Photo Printing Wizard. The figure above is an average value, measured when printing continuously using the ink immediately after it is unsealed, until the ink is out. Ink yield may vary.
- 6 Print speed obtained using compatible Canon digital still camera incorporating DIGiC II -other camera models may vary-.
- 7 Printing a 5 megapixel image taken by certain Canon digital cameras, using PictBridge, on default settings, using Photo Paper Plus Glossy without border. Actual print speed may vary.
- 8 Compact Flash, Microdrive, Smart Media*, Multimedia Card, SD Card, Memory Stick, Memory Stick PRO, Memory Stick DUO*, Memory Stick DUO PRO*, xD-Picture Card*, miniSD Card* (*Can be used with the addition of a special adapter sold separately).
- 9 To test the image permanence of prints that are stored in an album, we use the accelerated testing method as how the image permanence of silver-halide photo papers are measured when stored in dark places. Print samples are printed with the optical density of 1.0 (each Bk, C, M, Y). The samples are kept in a certain environment of high temperature and 50% humidity. The rate of the decrease in the optical density and rate of yellow discoloration are recorded. The recorded results are then converted to the length of time when print image is kept in an environment of 23°C / 50% humidity.
- 10 Based on accelerated testing, assuming image is stored in an album at 23°C / 50% R.H. and printed using 'Genuine' Canon inks onto Photo Paper Pro.
- 11 Languages supported are: English, German, French, Dutch, Spanish, Italian, Swedish, Portuguese, Russian, Polish, Hungarian, Czech, Turkey, Simplified, Chinese, Japanese.
- 12 Mobile phones and PDA's must be Bluetooth enabled and support Bluetooth version 1.1 or above Photo printing only - pictures must be in the JPEG format. Bluetooth operation depends on the device and software version used.
- 13 The mobile phone must have an IrDA version 1.1 port and support IrOBEX. Pictures must be in the JPEG format.

Some images are simulated for clarity of reproduction. All data is based on Canon's standard testing methods except where indicated. Specifications are subject to change without notice. ™ and ©: All company and/or product names are trademarks and/or registered trademarks of their respective manufacturers in their markets and/or countries.



you can
Canon

Canon Inc
www.canon.com

Canon Europa NV
www.canon-europe.com

