



The compact A3 colour printer delivering huge business benefits

C8600n
C8600dn
C8600cdtn



A3/A4 PRINTS



COLOUR/MONO



1-10 USERS



High Definition Color



C8000 Series

C8600



Half the size
of competitor
A3 printers

Small in size & cost. Big in productivity & professionalism

There has never been a printer like the C8600. Never before has fast, A3 colour printing been so affordable. Never before has a networked A3 colour printer had such a remarkably small footprint.

It's a ground-breaking combination from OKI Printing Solutions, the specialists in printed communications for business.

With its incredibly small footprint, the C8600 is a giant step forward in A3 business printing.



QUICK OVERVIEW



1-10 USERS



COMPACT SIZE

Half the overall size of other A3 colour printers



HIGH PRINT SPEED

26ppm colour/32ppm mono in A4
15ppm colour/17ppm mono in A3



RANGE OF MEDIA HANDLING

A6-A3, banners, business cards and CD labels



SINGLE-PASS PRINTING

Straight, smooth paper path minimises
user intervention



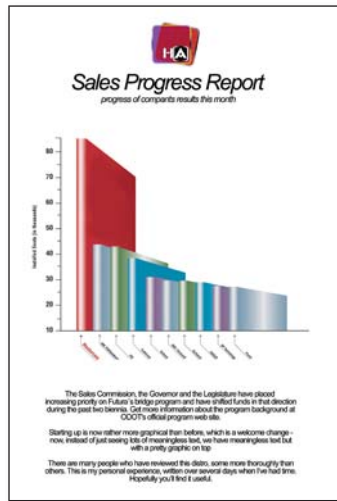
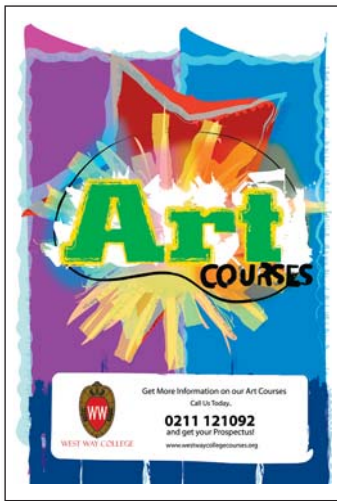
High Definition Toner

HIGH DEFINITION TONER

Deeper colour, finer detail, high gloss feel

From A6 to A3 documents, take greater control by doing it all in-house, from office printing and point-of-sale to presentations and sales materials

Posters



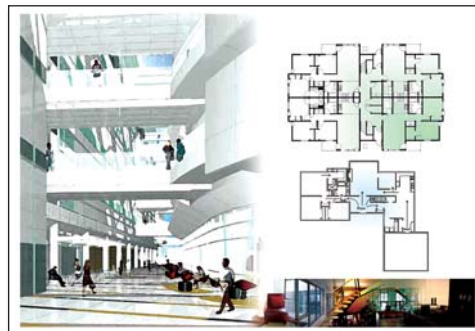
A4 duplex menus



Spreadsheets, balance sheets and presentations



Brochures, reports and product sheets



Architectural plans



Banners

PRINT A3



DUPLEX PRINTING



TEMPLATE MANAGER



HEAVYWEIGHT MEDIA (200gsm)

AFFORDABLE

A major breakthrough in cost vs performance

- Now businesses can enjoy the benefits of A3 colour whenever it's needed
- Cost per colour copy is significantly lower than A3 inkjet printers
- Cost per mono copy is similar to mono-only devices – no penalty when printing in black & white
- Full networking capability, so costs are shared across many users
- Excellent print quality, even on general office paper, to help keep costs low

COMPACT

A colour revolution – the most compact A3 printer ever seen

- Half the overall size of other A3 colour printers
- Quiet and small enough to sit conveniently close to the desktop, offering flexibility to workgroups
- Packs outstanding performance into its small footprint, so businesses gain extra floor space without losing speed, output or functionality

VERSATILE

Print a range of document sizes and formats with ease

- A4 for day-to-day requirements or A3 when the task demands it
- Print A3 banners, A3 posters, CD labels, business cards, A4 booklets, spreadsheets and more in-house, to help businesses control their image and costs
- Easily handles media up to 200gsm, ideal for printing high quality documents
- Duplex capability enables double-sided printing – great for producing professional A4 booklets
- Template Manager 2006 software holds a range of A3 and A4 template designs, for easy document creation

FAST

Fast printing to enhance efficiency

- Print speeds of 26ppm colour/32ppm mono in A4 and 15ppm colour/17ppm mono in A3 keep work flowing productively
- Time to first page is a brief 10 seconds, utilising time more effectively
- High speed USB2 connection and built-in networking capability enables fast workgroup printing



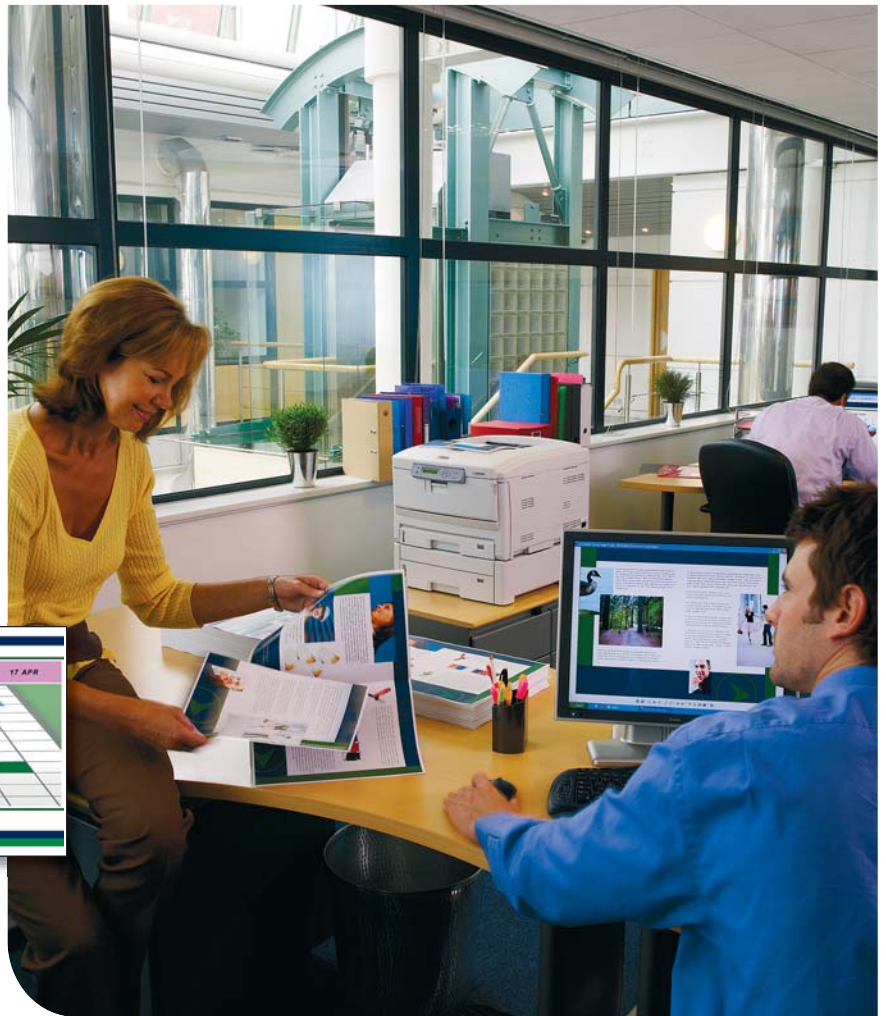
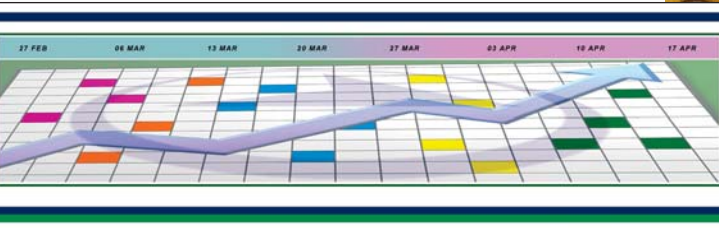
CD solutions



Menus and price guides



DL postcards



A4 booklets for a professional look



Postcards, flyers and small booklets



Business and loyalty cards



PRINT CREATIVELY

Colourful

Print quality will visibly enhance documents across the business

- ProQ2400 Multi-level technology and our unique microfine High Definition Toner have been developed to work in unison to give greater depth of detail and colour to printed documents and a high gloss finish
- Photo Enhance, selectable within the driver, allows you to print sharp, photo-like pictures on ordinary office paper

Easy to use

A printer that enables creativity

- The C8600 can be installed easily and with minimal training, getting users printing quickly
- Template Manager 2006 is unique to OKI Printing Solutions and simplifies the design and printing of a range of documents on non-standard media
- For support and tips, Ask OKI offers online advice, with one-click access via the printer driver
- The single-pass, straight paper path ensures smooth paper flow and minimises user attention

Easy to control

Simple ways to keep on top of costs and usage

- An optional lockable cabinet can secure the lower paper tray, preventing unauthorised access – especially useful in communal areas
- Print Control enables the management of colour use and printing costs of each individual user

Reliable

Maximise time and productivity

- Single-pass digital LED technology offers smoother paper handling across a wide range of weights and sizes
- The straight paper path minimises the need for user attention and maintains the workflow
- OKI Printing Solutions is a pioneer in digital LED printing – proven, reliable technology from the experts in printed communications for business

HIGH DEFINITION COLOUR



Technology without equal. Printing without effort

High Definition Colour is OKI Printing Solutions' own unique collection of market defining hardware and software technologies. Together, these components deliver unsurpassed colour printing... simply, intelligently and perfectly.

As the specialists in business printing solutions and leaders in colour printing, we can be trusted to deliver. Great colour starts with OKI Printing Solutions.

UTILITY SUITE



Unlock printing power and maintain business control

The C8600 Utility Suite is a unique set of software designed to help users get the most out of their printer. Below are four of the advanced utilities that deliver increased printing power and management control. For a complete list of utilities refer to the product specification table overleaf.

Template Manager 2006

This powerful software program makes life easier in the office by providing ready-made templates for many kinds of stationery and promotional materials such as labels, business cards, banners & CD/DVD labelling. The unique Editing Suite allows the freedom to create new templates for specific media or industry specific documents and to make it even easier the software automatically matches the document with the correct media. These templates can also be shared across networks for design/brand consistency.

Photo Enhance

Photo Enhance adjusts the tonal quality of images, making them appear brighter and more vibrant. This allows users to achieve clear, sharp and photo-like

quality pictures even on ordinary office paper. This unique OKI Printing Solutions' feature is selectable within the printer driver and will enable any business to enjoy truly professional in-house printing.

PrintSuperVision

This system allows IT support staff to monitor all business printers within the firewall, regardless of printer make. Access is given to networked printer data for monitoring, reporting and managing networked printers in real-time. The user interface is via a standard web browser and no additional software is required.

Print Control

Print Control is a job accounting and reporting program which enables network administrators to track printer usage and control costs. This easy to use utility captures details such as number of printouts, whether colour or mono, the paper type and size and the consumables used. Printer access can be restricted to authorised individuals or groups, and pre-defined cost limits can be set, controlling further access once these print limits have been reached.

THE C8600 FEATURES AT A GLANCE

	C8600n	C8600dn	C8600cdtn
Colour print speed (A4/A3)	26/15ppm	26/15ppm	26/15ppm
Mono print speed (A4/A3)	32/17ppm	32/17ppm	32/17ppm
Paper size	A6, A5, A4, A3, A3 banner	A6, A5, A4, A3, A3 banner	A6, A5, A4, A3, A3 banner
Paper capacity	300 + 100	300 + 100	300 + 530 + 100
Duplex (for double-sided printing)	○	●	●
2nd paper tray (for 930 sheet max paper capacity)	○	○	●
Cabinet	○	○	●
Windows 98/ME/2000/XP support	●	●	●

● Standard ○ Optional

The C8600 Colour and Mono Printer

		C8600n	C8600dn	C8600cdtn
Order number		01196901	01197001	01197101
Speed & throughput	A4 Print speed	26ppm colour, 32ppm mono		
	A3 Print speed	15ppm colour, 17ppm mono		
	Time to first print	9.5 seconds mono		
		10 seconds colour		
	Warm up time	up to 90 seconds from power on & up to 75 seconds from power save		
Processor speed	200MHz			
Print quality	Resolution	ProQ2400 Multi-level technology 1200 x 600dpi		
	Enhancements	Auto Colour Balance, Photo Enhance via Driver		
Compatibility	Printer languages	Windows Host Based Printing System		
	Connectivity	Hi-Speed USB & 10/100-TX Ethernet		
	OS Compatibility	Windows 98 / ME / NT4.0 / 2000 / XP Home / XP Professional / XP Professional x64 / Server 2003 / Server 2003 for x64		
Utility Suite	Template Manager 2006 (Windows only), Print Control Server (Windows only), Print Control Client, PrintSuperVision.net (Windows only), Web Print (Windows only), Colour Correct, Oki LPR (Windows only), Swatch Utility, Web Driver Installer (Windows only)			
Memory	Std RAM	128MB		
	Max RAM	128MB		
Paper handling	Paper capacity tray 1	300 sheets of 80gsm. Paper sizes: A3, A4, A5, B4, B5, A6		
	Paper capacity optional 2nd tray	530 sheets of 80gsm. Paper sizes: A3, A4, B4, A5, B5		
	Paper capacity of multi-purpose tray	100 sheets of 80gsm. Paper sizes: A3, A4, A5, B4, B5, A6, 10 Envelopes (Com-10, DL, C4, C5), Labels (Avery 7162, 7664, 7666), Custom Size (up to 1200mm length including Banners), 50 Transparencies		
	Standard tray media weight	64–120gsm		
	Optional 2nd tray media weight	64–176gsm		
	Multi-purpose tray paper weight	64–200gsm		
	Duplex	Optional	Standard	
	Duplex paper sizes	Supported paper sizes: A3, A4, A5, B4, B5. Supports Custom Size: Width 148.5–297mm Length 182–420mm		
	Duplex paper weight	64–105gsm		
	Paper output	250 sheets face down, 100 sheets face up, 80gsm		
	Operating conditions	Temperature/Humidity	10°C–32°C (17°C–27°C recommended) / 20% to 80% RH (50% to 70% RH recommended)	
Storage		-10°C–43°C, 10% to 90% RH		
Power requirements	Power supply	Single phase 220-240VAC, frequency 50Hz +/-2%		
	Power consumption	Typical 550W, Peak 1300W, Idle 200W (average), Power Save < 15W		
Noise level	Operating: Up to 54 dB(A), Standby: 37 dB(A), Power Save: Background Level			
Dimensions (HxWxD)		341mm x 485mm x 593mm	341mm x 485mm x 648mm	920mm x 485mm x 648mm
Weight		Approx 40kgs (including all consumables)	Approx 45kgs (including all consumables)	Approx 70kgs (including all consumables)
Duty cycle	Printer duty (max)	75,000 pages/month		
	Printer duty (average)	1,500 – 5,000 pages/month		
Warranty	Pan European 1 year on-site			
Accessories	Duplex	Optional (43226003)	Standard	Standard
	2nd tray	Optional (43231803)	Optional (43231803)	Standard
	Cabinet	Optional (01200801)	Optional (01200801)	Standard

*1 Check local OKI Printing Solutions website for latest driver releases

Consumables Information: For the protection of your printer, and in order to ensure that you benefit from its full functionality, this model has been designed to operate only with genuine OKI Printing Solutions toner cartridges. These can be identified by the OKI trademark. Any other toner cartridge may not operate at all, even if it is described as "compatible", and if it does work, your printer's performance and print quality may be degraded.

Description	Life* (pages)	Order Numbers		
Black toner	6,000	43487712		
Colour toners	6,000	Cyan: 43487711	Magenta: 43487710	Yellow: 43487709
Image drum	20,000			
	A4 pages @ 3 pages/job	Black: 43449016	Cyan: 43449015	Magenta: 43449014 Yellow: 43449013
Transfer belt	80,000	43449705		
Fuser unit	100,000	43529405		

* All toners: A4 pages @ 5% Printer shipped with 2000 pages @ 5%. All Drums: A4 pages average life. Specification subject to change without notice. All trademarks acknowledged.

Colour Printers

Mono Printers

MFPs

Fax

Dot Matrix

OKI SYSTEMS (UK) LTD,
550 Dundee Road, Slough,
Berkshire, SL1 4LE
United Kingdom
Tel: +44 (0)1753 819819
Fax: +44 (0)1753 819899

WWW.OKIPRINTINGSOLUTIONS.CO.UK



As an ENERGY STAR Partner, Oki has determined that this product meets the ENERGY STAR guidelines for energy efficiency.



OKI
PRINTING SOLUTIONS