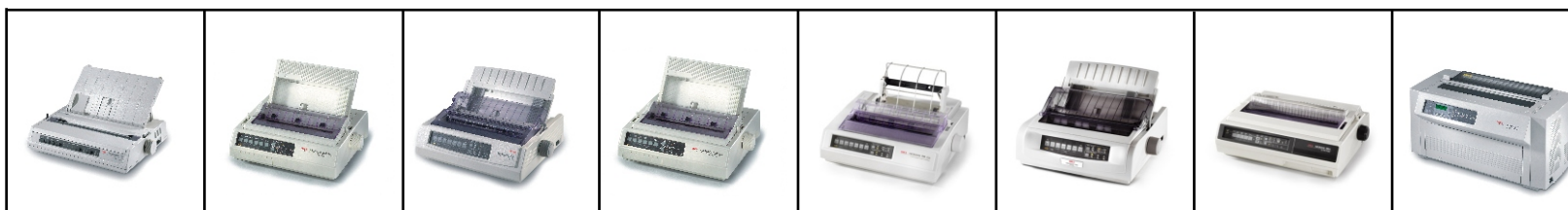


CHOOSE THE RIGHT DOT MATRIX PRINTER FOR YOU

9-PIN DOT MATRIX RANGE

Oki's 9-pin MICROLINE printers offer high-quality printing, unsurpassed paper handling, extreme reliability and fast throughput.



Narrow carriage	Model Number	ML280	ML320 ELITE	ML3320	ML320FB	ML520 ELITE	ML5520 (New)	N/A	N/A
Wide carriage	Model Number	N/A	ML321 ELITE	ML3321	N/A	ML521 ELITE	ML5521 (New)	ML3410	ML4410
Print head	Number of pins	9	9	9	9	9	9	9	18 (2 x 9)
	Fastest print speed (cps)	300	360	435	360	433	570	550	1066
	Utility/LQ print speed at 10cpi (cps)	200/50	250/63	290/73	250/63	325/81	380/95	417/104	800/200
	Number of copies	1+3	1+4	1+4	1+4	1+4	1+5	1+7 (Bottom tractor)	1 + 9
	Resolution (dpi)	240 x 216	240 x 216	240 x 216	240 x 216	240 x 216	240 x 216	240 x 216	240 x 216
Paper feed	Feed method	Friction feed Platen pin feed	Friction feed Push tractor	Friction feed Push tractor	Friction feed Push tractor	Friction feed Push tractor	Friction feed Push tractor	Friction feed Push tractor	Friction feed Push tractor
	Tractor options	Top pull	Top pull Bottom push	Top pull Bottom push	Top pull Bottom push	Top pull Bottom push	Top pull Bottom push	Top pull Bottom push	N/A
	Cut sheet feeder options	Single & dual bin	Single & dual bin	Single & dual bin	Single & dual bin	Single & dual bin	Single & dual bin	Single & dual bin	N/A
Column width (characters)	Narrow carriage version at 10cpi	80	80	80	106	80	80	N/A	N/A
	Wide carriage version at 10cpi	N/A	136	136	N/A	136	136	136	136
	Compressed mode (narrow/wide)	132	160/272	160/272	212	160/272	160/272	272	272
Interfaces & Emulations	Number of fonts	4	4	5 + barcodes	4	5 + barcodes	5 + barcodes	5 + barcodes	6 + barcodes
	Emulation	Epson FX or IBM Graphics or Oki MICROLINE	Epson FX, IBM PPR/ Graphics or Oki MICROLINE	Epson FX, IBM PPR/ Graphics, Oki MICROLINE	Epson FX, IBM PPR	Epson FX, IBM PPR/ Graphics, Oki MICROLINE	Epson FX, IBM PPR, Oki MICROLINE	Epson FX, IBM PPR XL or Oki MICROLINE/PM (optional)	Epson FX, IBM PPR, Oki MICROLINE
	Standard interface	Parallel	Parallel	Parallel	Parallel	Parallel	Parallel + USB	Parallel + Serial	Parallel + Serial
	Colour print	No	No	No	No	No	No	No	No

CHOOSE THE RIGHT DOT MATRIX PRINTER FOR YOU

24-PIN DOT MATRIX RANGE

If you require crisp, quality invoices, multiple copies, low cost per page or better defined barcodes then the 24-pin range is the ideal solution. With more pins in the print head, you get a higher resolution which means better quality.

							
Narrow carriage	Model Number	ML380	ML3390	ML390FB	ML590 ELITE	ML5590 (New)	ML395 B/C
Wide carriage	Model Number	N/A	ML3391	N/A	ML591 ELITE	ML5591 (New)	N/A
Print head	Number of pins	24	24	24	24	24	24
	Fastest print speed (cps)	192	390	270	450	473	607
	Utility/LQ print speed at 10cpi (cps)	160/53	260/87	225/75	300/100	315/105	405/135
	Number of copies	1+2	1+4	1+4	1+3	1+4	1+3
	Resolution (dpi)	240 x 360	360 x 360	240 x 360	360 x 360	360 x 360	240 x 360
Paper feed	Feed method	Friction feed Push tractor	Friction feed Push tractor	Friction feed Front push tractor	Friction feed Push tractor	Friction feed Push tractor	Friction feed Push tractor
	Tractor options	Top pull	Top pull Bottom push	N/A	Top pull Bottom push	Top pull Bottom push	Top pull Bottom power push
	Cut sheet feeder options	Single bin	Single & dual bin	Single bin	Single & dual bin	Single & dual bin	Single & dual bin
Column width (characters)	Narrow carriage version at 10cpi	80	80	106	80	80	N/A
	Wide carriage version at 10cpi	N/A	136	N/A	136	136	136
	Compressed mode (narrow/wide)	160	160/272	212	160/272	160/272	272
Interfaces & Emulations	Number of fonts	4	10 + barcodes	7	8 + barcodes	11 + barcodes	9 + barcodes
	Emulation	Epson LQ, IBM PPR X24/24 AGM	Epson LQ ESC/P2, IBM PPR X24/XL24	Epson LQ, IBM PPR X24E/X24E AGM	Epson LQ ESC/P2, IBM PPR X24E/X24E AGM	Epson LQ, IBM Proprinter III/AGM	Epson LQ, IBM PPR X24E/X24E AGM
	Standard interface	Parallel	Parallel+USB	Parallel	Parallel	Parallel+USB	Parallel+Serial
	Colour print	No	No	No	Optional	No	Standard on 395C