

Phaser®  
N/DN61\*  
A4  
Colour  
Laser Printer



# Xerox® Phaser® N/DN61 Colour Laser Printer

Business-ready colour  
for the way you work



# Phaser® N/DN61 Colour Laser Printer

**Exceptional colour printing for today's business world.** You want the advantage of colour to get noticed. You need a practical, low waste printer that's up to the task. Enter the Xerox Phaser 61 colour laser printer, your simple, productive printing solution.



## Impressive colour

The Phaser 61 colour printer gives your documents a powerful, colourful boost.

- **Outstanding print quality.** A print resolution of up to 600x600x4 dpi gives your documents attention-grabbing appeal with vibrant colour reproduction.
- **Advanced toner technology.** Xerox-exclusive EA Toner uses particles engineered for uniform size and shape, producing superior image detail and line definition, and text that's sharp and clear.
- **Always the right colours.** Pantone® Colour approved solid-colour simulations and Xerox colour correction technology ensure consistent results.
- **True Adobe® PostScript® 3™.** Count on consistently precise print jobs with the brightest, truest colours and superior graphics.

## Ready to help

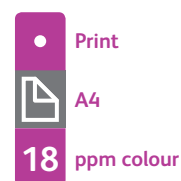
We designed the Phaser 61 as a simple colour printer that supports single users and small workteams.

- **Print and go.** The Phaser 61 colour printer works quickly, with print speeds of up to 18 ppm for colour and 20 ppm for black and white.
- **Stay secure.** IPSec, SNMPv3, IP filtering, IPv6 and available Secure Print. The latest security advancements keep your sensitive documents away from unintended recipients.
- **Total peace of mind.** Sturdy and reliable, the Phaser 61 printer is built for the long haul. But just in case, you're completely covered with the industry's best support, including a one-year on-site warranty provided by trained Xerox service professionals.

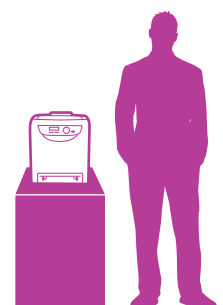
- **More printer for more people.** Connect and go, thanks to built-in networking and seamless compatibility with mixed-user environments, including PC, Macintosh and Linux.
- **Room to grow.** Easily add memory to enable more time-saving features, like Saved Print, which lets you store frequently used files on the device for fast walk-up printing. Plus, get more uninterrupted productivity by adding a second 250-sheet paper tray for a total of 500 sheets.
- **Easy management.** With Xerox CentreWare® IS, remote device administration is handled with ease right from your computer's browser.
- **Troubleshooting assistance.** Our PrintingScout® alerts proactively notifies you of problems such as interrupted printing and offers quick tips for solving them.

### Phaser® 61 Quick Facts

- Print up to 18 ppm colour, 20 ppm black and white
- 600 x 600 x 4 dpi
- Ideal for 1-5 users
- 40,000 pages/month duty cycle
- 256 MB memory, expandable to 1,280 MB



WxDxH:  
400 x 457 x 415 mm



## Low-impact, inside and out

From arrival to disposal, the Phaser 61 printer helps you meet today's environmental challenges.

- **Environmentally friendly.** Cleverly designed packaging for both the printer and its consumables means you'll create up to 80% less waste than with comparable laser printers.
- **Print more, use less.** Whether you choose manual two-sided printing or upgrade to convenient automatic duplexing, you'll conserve paper for reduced costs and increased sustainability. Plus, features like N-up printing, which lets you print multiple pages on one sheet, help you save even more.
- **A perfect fit.** Its small footprint allows for easy integration within your work space, whether on your desk or in a central location.
- **The quiet partner.** Engineered for extra-quiet operation to minimise impact on busy offices.
- **Energy saving.** Reduce energy consumption with intelligent sleep mode. You can choose when the printer automatically switches to Power Save mode. Or, simply press the convenient front panel button to start or stop Power Save when it suits you.
- **Seal of approval.** The Phaser 61 printer meets the Energy Star requirements for sustainability, the industry's most stringent conservation criteria.
- **Hassle-free recycling.** The Xerox Green World Alliance recycling programme lets you ship your used print cartridges to Xerox for free and we'll handle recycling.



1

Optional automatic two-sided printing delivers money-saving, professional-looking output (standard on DN configuration).

2

The 250-sheet tray provides plenty of paper capacity for a busy individual user or small workteams.

3

An additional 250-sheet paper tray (optional) increases total capacity to 500 sheets of uninterrupted printing.

4

Optional wireless network adaptor gives you the flexibility of cable-free network printing.

5

Intuitive front panel includes on-screen toner gauge for quick, at-a-glance checking of current toner levels.

6

Convenient front-panel button lets you wake the printer up or initiate Power Save mode when the printer is idle.



Two-sided



N-Up



EA Toner



Sleep Mode



Low Waste



Energy Star

# Phaser® 61

## Colour Laser Printer



		Phaser N61	Phaser DN61
<b>Speed</b>		Up to 18 ppm colour / 20 ppm black and white	
<b>Duty Cycle</b>		Up to 40,000 pages / month <sup>1</sup>	
<b>Recommended Volume</b>		Up to 2,500 pages / month <sup>2</sup>	
<b>Paper Handling</b>			
Paper input	Standard	<b>Manual Feed Slot:</b> 1 sheet; Custom Sizes: 76.2 x 127 mm to 216 x 356 mm	
		<b>Tray 1:</b> 250 sheets; Custom Sizes: 76.2 x 127 mm to 216 x 356 mm	
	Optional	<b>Tray 2:</b> 250 sheets; Custom Sizes: 148 x 210 mm to 216 x 356 mm	
Paper output		150 sheets face down	
Automatic two-sided printing		Optional	Standard
<b>Print</b>			
First-page-out-time		As fast as 13 sec. colour / 12 sec. black and white	
Resolution (max)		Up to 600 x 600 x 4 dpi	
Processor		400 MHz	
Memory (std / max)		256 MB / 1,280 MB	
Connectivity		USB 2.0, 10/100Base-TX Ethernet, Optional wireless network adapter	
Page description languages		Adobe® PostScript® 3™, PCL® 6 emulation	
Print features	Standard	N-up, Fit to page, Booklet printing, Skip blank pages, Transparency separators, Run black, Covers/Separators <sup>3</sup> , Poster printing <sup>3</sup> , Watermarks <sup>3</sup> , Overlays <sup>3</sup> , Banner sheets <sup>3</sup> , Draft mode <sup>3</sup>	
	Optional <sup>4</sup>	Secure Print, Proof Print, Personal Print, Saved Print, RAM collation	
<b>Security</b>		IPSec, SNMPv3, Secure Print <sup>4</sup> , IP filtering, IPv6	
<b>Warranty</b>		One-year on-site warranty	

<sup>1</sup> Maximum volume capacity expected in any one month. Not expected to be sustained on a regular basis.

<sup>2</sup> Range reflects the number of pages per month the product can regularly print while maintaining optimal performance (considering factors including supplies replenishment and reliability over the expected product life).

<sup>3</sup> Accessed via PCL driver.

<sup>4</sup> Requires at least 512 MB RAM.

### Device Management

Phaser Installer, CentreWare® IS Embedded Web Server, CentreWare Web, PrintingScout®, Email alerts

### Print Drivers

Windows® 2000/XP/Vista, Server 2003/2008, Xerox Global Print Driver, Xerox Mobile Express Driver, Mac OS® X version 10.3 and above, Linux: SUSE™, Red Hat®, TurboLinux 10 Desktop

### Font Capability

136 PostScript® fonts; 81 PCL® fonts

### Media Handling

Manual Feed Slot and Tray 1: 65 – 220 gsm; Media types: Plain paper, glossy, envelopes, labels, card stock, postcards; 250-sheet feeder (optional): 60 – 105 gsm; Duplex Unit (optional): 60 – 105 gsm

### Colour Standards

PANTONE® Colour approved solid-colour simulations, Colour Correction, ICC Profile, ColorSync

### Operating Environment

Temperature: Storage: -20° to 40° C; Operating: 10° to 32° C; Humidity: 15% to 85%; Sound pressure levels: Printing: 51.4 dB(A), Standby: 30.1 dB(A); Sound power levels: Printing: 6.33 B, Standby: 4 B; Warm-up time (from sleep mode): 30 seconds

### Electrical

Power: 220–240 VAC, 50/60 Hz; Power consumption: Standby: 50 W, Printing: 280 W; Power Saver: 8 W (default time to Power Saver is 30 min.), ENERGY STAR® qualified

### Dimensions (WxDxH)

400 x 457 x 415 mm; Weight: 18.4 kg; Package Dimensions (WxDxH): 572 x 542 x 590 mm; Weight: 23.5 kg; Optional 250-sheet feeder: 400 x 457 x 108 mm; Weight: 4.2 kg

### Certifications

FCC Part 15, Class B, Listed UL 60950-1/CSA 60950-1-03, CE Mark applicable to Low Voltage Directive 2006/95/EC and EMC Directive 2004/108/EC, Section 508 ADA

### What Comes In The Box

- Phaser 61 Printer
- Starter Toner Cartridges (1,000 (CMYK) print capacity)
- Software and Documentation CD (with User Manual, Quick Installation Guide, Warranty Statement)
- Power cord

### Supplies Recycling Programme

Consumables for the Phaser 61 are part of the Xerox Green World Alliance Supplies Recycling Program. For more information, please visit the Green World Alliance website at [www.xerox.com/gwa](http://www.xerox.com/gwa)

### Supplies

Toner Cartridges<sup>1</sup>:

Cyan: 2,000 std. pages	106R01477
Magenta: 2,000 std. pages	106R01478
Yellow: 2,000 std. pages	106R01479
Black: 2,600 std. pages	106R01480

### Options

250-sheet feeder	097504070
512 MB Memory	097503635
Duplex unit	097504069
Wireless Network Adaptor	
– European Power Converter <sup>2</sup>	097503741
– UK Power Converter	097503742

<sup>1</sup> Average standard pages. Declared Yield in accordance with ISO/IEC 19798. Yield will vary based on image, area coverage and print mode.

<sup>2</sup> Not available in Denmark and Switzerland



For more information visit us at [www.xerox.com/office](http://www.xerox.com/office)

© 2009 Xerox Corporation. All rights reserved. Contents of this publication may not be reproduced in any form without permission of Xerox Corporation. XEROX®, CentreWare®, Phaser® and the sphere of connectivity design are trademarks of Xerox Corporation in the U.S. and/or other countries. Adobe® and PostScript® 3™ are registered trademarks or trademarks of Adobe Systems, Incorporated. PCL® is a registered trademark of Hewlett-Packard. As an ENERGY STAR® partner, Xerox Corporation has determined that this product meets the ENERGY STAR guidelines for energy efficiency. ENERGY STAR and the ENERGY STAR mark are registered U.S. marks. All other trademarks are the property of their respective manufacturers. The information in this brochure is subject to change without notice. 10/09 6148R-01EA

\*Printer model number may vary on shipping, specifications will always be as per spec sheet.

