



KONICA MINOLTA

magicolor® 2530DL



**Compact workgroup
colour laser printer -
direct photo print ready**



REVOLUTION IN COLOUR PRINTING



KONICA MINOLTA

magicolor® 2530DL

Compact workgroup colour laser printer – direct photo print ready

Imagine having a colour laser printer that not only fits easily on every office desk, but enables you to add brilliant colour and sophistication to your business documents. Ideal for small workgroups, the magicolor® 2530DL comes with direct photo print functionality, enabling you to create fast and easy print outs of your photos without the use of a PC. Revolutionary engineering, convenience and simplicity are brought together in one compact solution: the magicolor® 2530DL.

Simple and silent through smart design

A small footprint and ease of use were key when designing the magicolor® 2530DL. Ideal for small workgroups, it is so compact it virtually fits in any office space. What is more, you will barely notice it due to its low noise level. Your magicolor® 2530DL could not be easier to use. Full frontal access to paper and a limited number of consumables allows for infrequent maintenance. Furthermore, PageScope™ Web Connection provides you an easy way to track your consumables and manage your printer configuration through your web browser. Consumables are pre-installed making your magicolor® 2530DL print ready.

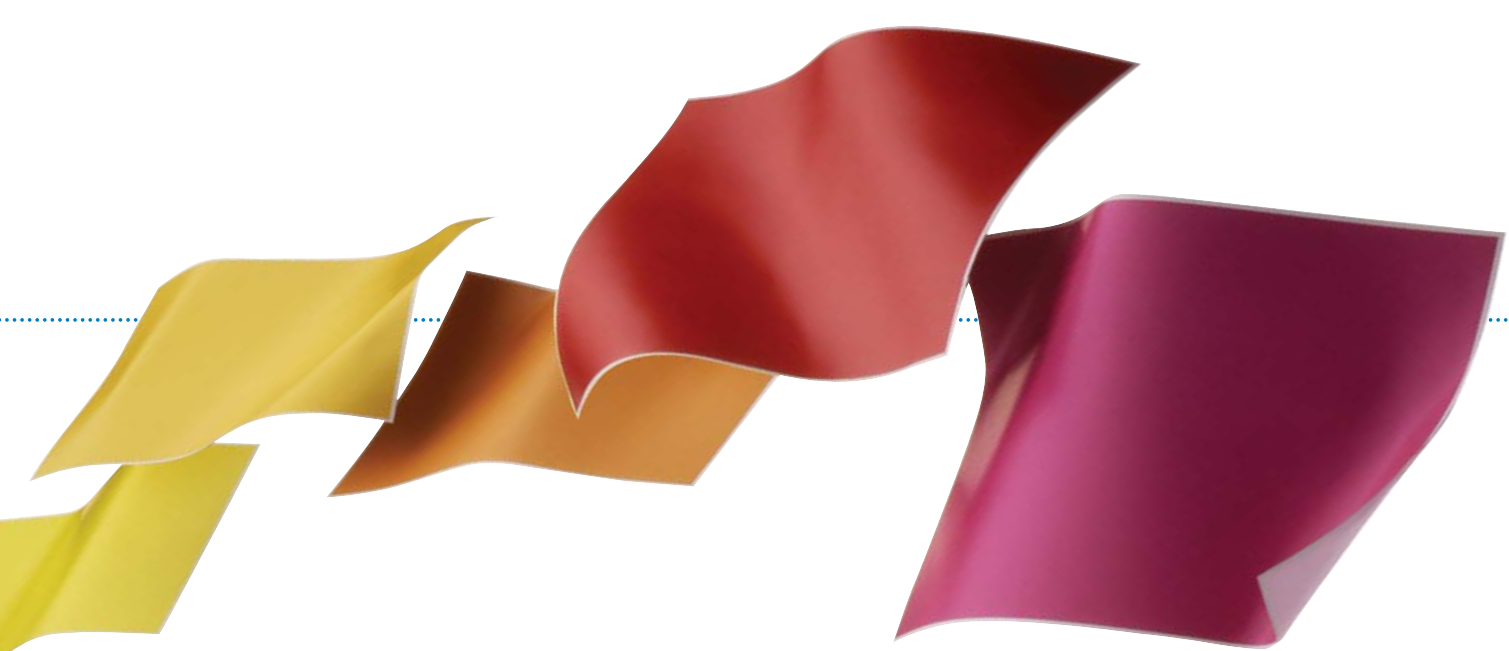
Consumables	Status	Level	Type
Black Toner Cartridge	██████████	100%	Standard
Cyan Toner Cartridge	██████████	100%	Standard
Magenta Toner Cartridge	██████████	100%	Standard
Yellow Toner Cartridge	██████████	100%	Standard
Drum Cartridge	██████████	100%	Standard

PageScope™ Web Connection

High-performance printing through enhanced versatility

With 5 ppm in colour, 20 ppm in monochrome and the first page out in only 12 seconds, the magicolor® 2530DL delivers you high quality print outs at top speed. Also, it comes with Ethernet standard so it will fit easily into your network environment. Thanks to a standard network, small workgroups with multiple operating systems will benefit from its enhanced versatility. The powerful Konica Minolta Raster Language technology makes it possible to print from virtually any application including Windows®, Mac® and Linux®. High processing power coupled with 64 MB standard memory configuration makes this little dynamo able to handle even the most complex print jobs easily. To meet your growing workgroup printing demands, the magicolor® 2530DL is equipped with various options such as lower feeder to increase paper input capacity of up to 700 sheets, an automatic duplexer and extra memory to enhance direct photo print performance and functionality.





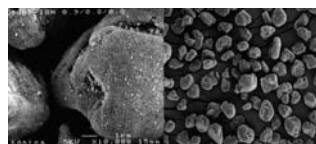
Professional printing in-house

With heavy paper support of up to 200 grams*, you can create a wide variety of professional documents and marketing material in-house. From mailshots, brochures to invoices, you have the added flexibility of printing your documents on demand. The optional duplexer allows you to print double-sided which enables you to create your own marketing materials and saves you considerable costs. Due to the pioneering technology of Simitri™ polymerised toner combined with 2400 x 600 dpi resolution, the magicolor® 2530DL delivers ultra sharp prints with gradients in brilliant colours!

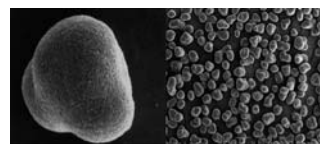
Direct Photo Print ready

The magicolor® 2530DL lets you print photos direct from any PictBridge-compliant digital camera. It's fast, easy and there's no PC involved. Using index printing, it also lets you print a contact sheet first. With the facility to scale and rotate images as well, you have all the convenience of managing and editing your photos - all from your camera.

Simitri



Conventional toner



Simitri™ polymerised toner



magicolor® 2530DL at a glance

- 5 ppm A4 in full colour and 20 ppm in monochrome
- First page out: 12 seconds
- Direct Photo Print (PictBridge compliant)
- Ethernet 10/100BaseTX & USB 2.0 (High-Speed) interfaces
- PageScope™ Web Connection
- Silent Engine Technology
- Compatible with Windows®, Mac® & Linux®
- Brilliant 2400 x 600 dpi print quality
- High quality Simitri™ polymerised toner
- 64 MB memory
- 200-sheet input feeder
- 5 easy to replace & access consumables
- PictBridge compliant



KONICA MINOLTA

magicolor® 2530DL

TECHNICAL DATA

Print process

Print method: Electro photographic printing system
Print speed: Up to 5 ppm colour / up to 20 ppm monochrome
First page out: 12 seconds monochrome, 21 seconds colour
Warm-up time: 49 seconds
Resolution: 2400 x 600 dpi; 1200 x 600 dpi; 600 x 600 dpi
Duty cycle: 35,000 pages per month

Hardware and software capabilities

Processor type: 130 MHz ASIC
Memory: 64 MB (max. 576 MB)
Printer emulation: Konica Minolta Raster Language (host based)
Printer management: PageScope™ Web Connection, status display
Colour stability management: Enhanced Automatic Image Density Control (eAIDC)

Interface support

Ethernet 10/100BaseTX (IEEE 802.3) and USB 2.0 (High-Speed) supporting Microsoft 'Plug and Play', PictBridge (Digital camera via special USB), DPOF 1.1

Operating system compatibility

Windows®: XP (Home/Pro), Server 2003, 2000, NT 4.0, ME, 98SE
Macintosh®: OS X 10.2, 10.3, 10.4 (or higher)*
Linux®: RedHat 8.0 or later, SuSE 8.1 (or higher)

Paper handling

Standard paper input: 200-sheet multi-purpose tray
Optional paper input: 500-sheet lower paper feeder (max. 1)
Paper output: 200-sheet (face-down)
Media sizes supported: A4, B5, A5, legal, letter, Government letter/legal, statement, executive, folio, letter plus, UK Quarto, foolscap, Kai 16, Kai 32, 16K
Envelope sizes supported: Envelope #10, envelope C5, envelope C6, envelope DL, envelope monarch, envelope Youkei #4, envelope Choukei #3, envelope Choukei #4, J-Postcard, double postcard, photo size 4x6, photo size 10x15, custom (90-311 * 140-200 mm)
Duplexer: A4, letter, legal
Printable area: 4mm from all edges
Media type: Plain paper (60-90 g/m²), transparency, letterhead, envelope, label sheet, (thick paper 60 to 163 g/m², up to 200 g/m² with Mondi color copy 200 g/m², Cougar cover 65lb), Japanese official postcard, glossy

Physical

Dimensions: (D) 395 mm x (W) 430 mm x (H) 341 mm
Weight: Without consumables 15.9 kg, with consumables 18.9 kg

Electrical

Power requirements (220V/240V): VAC ±10%, 50/60 ±3% Hz
Power consumption: 1100 W (max.), average during printing < 600 W (monochrome), average during printing < 450 W (colour), <250 W (standby)
Energy save: <10 W
Energy Star compliant*

Environmental

Temperature requirements: 10° to 35° C (printing)
Humidity: 15% to 85% RH (printing)
Noise levels: <52dBA (printing), <35dBA (standby)

Regulatory/Safety conformity

UL, cUL, FCC-B, DOC, VCCI, CE Marking, C-Tick, CDRH

Consumables¹

Printer ships with installed cyan, magenta, yellow and black toner (yield up to 1,500 pages)
Replacements toner cartridges:
Standard: Cyan, magenta and yellow (yield up to 1,500 pages)
High capacity: Cyan, magenta, yellow and black (yield up to 4,500 pages)

Warranty period and conditions

1 year PROTECT.REPAIR on-site warranty (within EU; local law applies)

¹The stated life expectancy of each consumable in the printer is based on printing under specific operating conditions such as page coverage for a particular page size (5% coverage of A4). The actual consumables life will vary depending on the use and other printing variables including page coverage, page size, media type, continuous or intermittent printing, ambient temperature and humidity. For more information about toner life expectancy visit <http://printer.konicaminoltaeurope.com/tco>

²The addition of some options, in some combinations may cause the product to become non-compliant. Energy Star compliance does not represent an EPA endorsement of any product or service.

³Full PictBridge functionality requires 128 MB of additional memory

⁴Mac OS support is limited to basic office functionality. The magicolor® 2530DL Mac driver does not support advanced colour matching and PostScript functionality.

Specifications and accessories are based on the information available at the time of printing, and are subject to change without notice. For the latest information, please visit <http://printer.konicaminolta.com>

* Thick paper 60 to 163 g/m², up to 200 g/m² with Mondi color copy 200 g/m², Cougar cover 65lb.

Model specific features

Print speed:	5 ppm colour, 20 ppm monochrome
Resolution:	Up to 2400 x 600 dpi
Memory (RAM):	Standard 64 MB (max. 576 MB)
200-sheet multi-purpose tray:	Standard
500-sheet lower feeder:	Optional up to A4 (max. 1)
Automatic duplexer:	Optional
USB 2.0 (High Speed) interface:	Standard
Ethernet 10/100TX:	Standard
PictBridge:	Standard

Dealer address

©2006 KONICA MINOLTA All rights reserved. Specifications are subject to change without notice. The KONICA MINOLTA logo, magicolor and Simitri are trademarks or registered trademarks of KONICA MINOLTA. All other trademarks or registered trademarks are the property of their respective owners.

Websites:
www.konicaminolta.eu/printer
www.q-shop.com

Part Number: 1730993-001



Belgium and Luxemburg
Tel: (+32) 2 717 09 89 (French)
(+32) 2 717 09 91 (Dutch)
Fax: (+32) 2 717 09 26

France
Tel: (+33) 01 41 07 93 93
Fax: (+33) 01 40 83 01 10

Middle East
Tel: (+97) 1 4 335 2574
Fax: (+97) 1 4 335 2573

Denmark
Tel: (+45) 72 21 21 21
Fax: (+45) 72 21 21 22

Germany and Austria
Tel: (+49) 89 63 02 67 0
Fax: (+49) 89 63 02 67 67

Norway
Tel: (+47) 2 27 89 800
Fax: (+47) 2 27 89 850

Finland
Tel: (+358) 9 4 20 61
Fax: (+358) 9 4 20 62 00

Italy
Tel: (+39) 02 39 011 1
Fax: (+39) 02 39 011 219

Portugal
Tel: (+351) 949 21 26
Fax: (+351) 219 49 21 06

Spain
Tel: (+34) 90 222 32 27
Fax: (+34) 91 327 09 00

The Netherlands
Tel: (+31) 30 248 1200
Fax: (+31) 30 248 1211

For all other countries
Konica Minolta
Printing Solutions
Europe B.V.
Tel: (+31) 30 248 1200
Fax: (+31) 30 248 1211

Sweden
Tel: (+46) 8 622 51 00
Fax: (+46) 8 622 51 24

United Kingdom
Tel: (+44) 1784 442255
Fax: (+44) 1784 461641

Switzerland
Tel: (+41) 43 322 90 20
Fax: (+41) 43 322 90 29

Ireland
Tel: (+44) 1800 23 00 00
Fax: (+44) 01 46 22 645