

magicolor® 5430DL

**High speed**  
workgroup colour  
& monochrome printer



**REVOLUTION IN COLOUR PRINTING**



KONICA MINOLTA

# High speed workgroup colour & monochrome printer

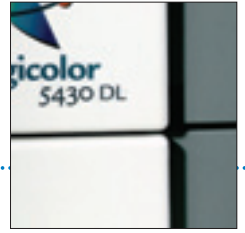
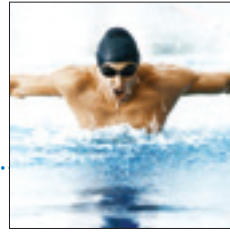
It is time to maximise your business performance for once and for all. Now, Konica Minolta introduces the revolutionary magicolor® 5430DL, built to improve your business and performance. The magicolor® 5430DL sets a new printing standard for small and middle-sized workgroups. How? Simple, it is the first laser printer that combines monochrome and colour printing in one single machine for the price of a monochrome.

## Two in one



When it comes to high-speed low cost printing, monochrome used to be the obvious choice, but not anymore. By introducing the magicolor® 5430DL, Konica Minolta sets a new standard for the colour printing world. The magicolor® 5430DL enables you to economically print crisp monochrome documents at a much faster rate when compared to similar workgroup monochrome printers in the market. Moreover, it will print your colour presentations with an impressive 2400dpi at 20ppm as well. The magicolor® 5430DL doesn't compromise in combining all the benefits of monochrome with impressive colour printing in one machine.

- 20 ppm A4 in full colour and monochrome
- First page out: 14 seconds in colour and monochrome
- Warm-up time: 35 seconds in colour and monochrome



20 ppm in  
**full colour**  
and monochrome



# magicolor® 5430DL



## More affordable than monochrome

In modern-day workgroups the requirement for fast, efficient and affordably priced colour printing solutions without sacrificing image quality continues to increase dramatically. By being far more cost-effective than most workgroup monochrome printers on today's market, the magicolor® 5430DL is a sound investment throughout its lifespan.

- Lower initial investment than most workgroup monochrome printers
- Lower costs per page in comparison to most workgroup monochrome printers
- Long life consumables and Toner Value Packs
- Exceptional reliability by superior laser technology
- Proven more reliable and cost-effective than LED technology

## Superior laser print quality

The magicolor® 5430DL is a professional solution ideal for communicating creatively in colour! Konica Minolta's pioneer Simitri™ toner combined with the high precision 2400 dpi PRISMLASER Technology™ allows you to produce business reports, charts, booklets, spreadsheets, flyers and stationery in stunning colour. From now on your business documents will be easily available, on demand and just-in-time at lower cost!

- Stunning 2400 dpi print quality
- High quality Polymerised toner
- PRISMLASER Technology™

## Designed with you in mind

The magicolor® 5430DL was designed with the end user in mind. This means you can rely on a user-friendly ready-to-run printing solution with only five consumables. Furthermore, the magicolor® 5430DL offers you easy front access to the consumables and supplies, a user-friendly back-lit display and convenient paper indicator. This will save you more time to improve your business performance, rather than wasting valuable time on maintenance.

- Five easy to replace consumables
- Paper indicator on lower feeder
- Backlit LCD



PRISMLASER  
TECHNOLOGY

The essentials of imaging

# magicolor® 5430DL

## magicolor® 5430DL Quick Overview



### Speed

- 20 ppm A4 in full colour and monochrome
- First page out: 14 seconds in colour and monochrome
- Warm-up time: 35 seconds

### Quality

- Superior 2400 dpi print quality
- High quality Simitri™ toner

### Options

- Automatic duplexer for two-sided printing
- 500-sheet lower input feeder (add up to two)

### Ease of use

- Compatible with Windows® 98SE / NT 4.0 / 2000 / XP/ Server2003, Mac® OS X (10.2 or higher) & Linux®
- Ethernet (10BaseT/100BaseTX) & USB 2.0 (High-Speed)
- Konica Minolta Raster Language
- A4 printer with 250 sheets (max. 1250) input
- Memory 64 MB (max 576 MB)
- Five easy to replace consumables
- Backlit LCD display

### The scalable solution

To meet your printing demands Konica Minolta offers low cost options to increase the capacity and performance of your magicolor® 5430DL. Add the automatic duplexer to create double-sided prints and increase the paper capacity up to 1250 sheets.

# magicolor® 5430DL

## TECHNICAL DATA

### Printing Process

Print Method: Electro photographic laser  
A4 Print Speed (simplex): 20ppm colour/monochrome  
A4 Print Speed (duplex): 11ppm colour/monochrome  
First page out: 14 seconds colour/monochrome  
Warm-up time: 35 seconds colour/monochrome  
Resolution: 2400 x 600 dpi; 1200 x 600 dpi; 600 x 600 dpi  
Duty Cycle: 60,000 pages per month

### Hardware and Software Capabilities

Processor type: ARM9 926EJ-S, 200 MHz  
Memory: 64 MB RAM (max 576 MB)  
Printer language: Konica Minolta Raster Language  
Colour Support: Enhanced Automatic Image Density Control (eAIDC), Automatic ICC-based colour matching, ICC device profiles

### Typefaces

Compatible with all Windows® and/or TrueType® fonts printed via Windows® GDI, Macintosh®, or Linux® utilities. One (1) resident typeface included.

### Interface Support

USB 2.0 (High-Speed) supporting Microsoft® 'Plug and Play'  
Simultaneous Interface Operation: All interfaces receive data at the same time  
Standard Interfaces: Ethernet (10BaseT/100BaseTX) supported TCP/IP, DHCP, BOOTP, HTTP, IPP (ver 1.1), SNMP (ver 1.0), SLP, Rendezvous, Raw port (9100)

### Operating System Compatibility

Windows® 98SE / ME / NT4 / 2000 / XP / Server 2003, Mac® OS X (10.2 or higher) & Linux®

### Paper Handling

Standard Paper Input: 250-sheet Lower Feeder  
Maximum Paper Input: 1,250-sheets  
Standard Paper Output: 250-sheet Face-down Output Tray  
Paper Sizes Supported:  
Multi-purpose Lower Feeder (250 sheets): A4, A5, B5, Letter, Legal, J-Postcard, Envelope, Custom (92-216 mm x 148-297 mm)  
Printable Area: 4mm from all edges, maximum printable area 207.9 x 347.6 mm  
Print Media: Plain Paper (60-90 gm<sup>2</sup>), Thick Stock 1 (91-150 gm<sup>2</sup>), Thick Stock 2 (151-210 gm<sup>2</sup>), Recycled Paper (60-90 gm<sup>2</sup>), Transparency, Letterhead, Envelope, Labels, Postcard, Glossy

### Physical

Type: Laser printer with internal controller  
Dimensions: (D x W x H): 520 x 425 x 440 mm  
Weight: 30.0 kg without consumables; 42.0 kg shipped with consumables

Dealer address

### Electrical

Power Requirements:  
220/240V Model: 220/240 VAC ±10%, 50/60 ±3% Hz  
Power Consumption (220V/240V): Max < 1250 W; Standby < 170 W; Energy Save < 43W  
Energy Star Compliant<sup>2</sup>

### Environmental

Temperature Requirements: Operating: 10° to 35°C; Non-Operating: 0° to 35°  
Humidity: Operating 15% to 85% RH; Non-Operating 10% to 85% RH  
Noise Levels: Printing < 54dBA; Standby < 39dBA

### Regulatory/Safety Conformity

UL, cUL, FCC-B, DOC, VCCI, CE Marking, C-Tick, CDRH

### Consumables<sup>1</sup>

Printer ships with installed cyan, magenta, yellow and black toner cartridge (yield up to 3,000 pages); waste toner box.  
Replacement cartridges:  
Cyan, magenta, yellow and black toner cartridges yield up to 6,000 pages.

### Warranty Period and Conditions

1 year PROTECT.REPAIR On-site Warranty (within EU; local law applies).

<sup>1</sup>The stated life expectancy of each consumable in the printer is based on printing under specific operating conditions such as page coverage for a particular page size (5% coverage of A4). The actual consumables life will vary depending on the use and other printing variables including page coverage, page size, media type, continuous or intermittent printing, ambient temperature and humidity. For more information about toner life expectancy visit <http://printer.konicaminoltaeurope.com/tco>

<sup>2</sup>The addition of some options, in some combinations may cause the product to become non-compliant. Energy Star compliance does not represent an EPA endorsement of any product or service.

<sup>3</sup>Mac® OS support is limited to basic office functionality. The magicolor® 5430DL Mac® driver does not support advanced colour matching and PostScript functionality.

### Model Specific Features

A4 Print Speed colour/monochrome:	Up to 20ppm
Resolution:	Up to 2400 x 600 dpi
Memory (RAM):	Standard 64 MB (max 576 MB)
Multi-purpose Lower Feeder (250 sheets):	Standard
10BaseT/100BaseTX Ethernet:	Standard
USB 2.0 Interface:	Standard
A4 500-sheet Lower Feeder Unit:	Optional (2 max)
Printer Cabinet:	Optional

©2005 KONICA MINOLTA All rights reserved. Specifications are subject to change without notice. The KONICA MINOLTA logo, magicolor are trademarks or registered trademarks of KONICA MINOLTA. All other trademarks or registered trademarks are the property of their respective owners.

[www.q-shop.com](http://www.q-shop.com)

Websites:  
[printer.konicaminolta.com](http://printer.konicaminolta.com)  
[www.q-shop.com](http://www.q-shop.com)

Part Number: 1730967-002



Q-SHOP  
PRINTERS & COPIER SUPPLIES  
[www.q-shop.com](http://www.q-shop.com)

**Belgium and Luxemburg**  
Tel: (+32) 2 - 479 64 23  
Fax: (+32) 2 - 479 97 42

**France**  
Tel: (+33) 01-41-07-93-93  
Fax: (+33) 01-40-83-01-10

**Middle East**  
Tel: (+97) 1 4 335 2574  
Fax: (+97) 1 4 335 2573

**Denmark**  
Tel: (+45) 72 - 21 21 21  
Fax: (+45) 72 - 21 21 22

**Germany and Austria**  
Tel: (+49) 89/63 02 67-0  
Fax: (+49) 89/63 02 67-67

**Norway**  
Tel: (+47) 2 27 89 800  
Fax: (+47) 2 27 89 850

**Finland**  
Tel: (+358) 9 4 20 61  
Fax: (+358) 9 4 20 62 00

**Italy**  
Tel: (+39) 02 39 011 1  
Fax: (+39) 02 39 011 219

**Portugal**  
Tel: (+351) 219 42 89 00  
Fax: (+351) 219 42 89 09

**Spain**  
Tel: (+34) 91 327 73 00  
Fax: (+34) 91 327 09 00

**The Netherlands**  
Tel: (+31) 30 - 248 1200  
Fax: (+31) 30 - 248 1211

**For all other countries**  
**Konica Minolta**  
**Printing Solutions**  
**Europe B.V.**  
Tel: (+31) 30 - 248 1200  
Fax: (+31) 30 - 248 1211

**Sweden**  
Tel: (+46) 8 - 622 51 00  
Fax: (+46) 8 - 622 51 24

**United Kingdom and Ireland**  
Tel: (+44) 1784 - 442255  
Fax: (+44) 1784 - 461641

**Switzerland**  
Tel: (+41) 43 322 90 20  
Fax: (+41) 43 322 90 29